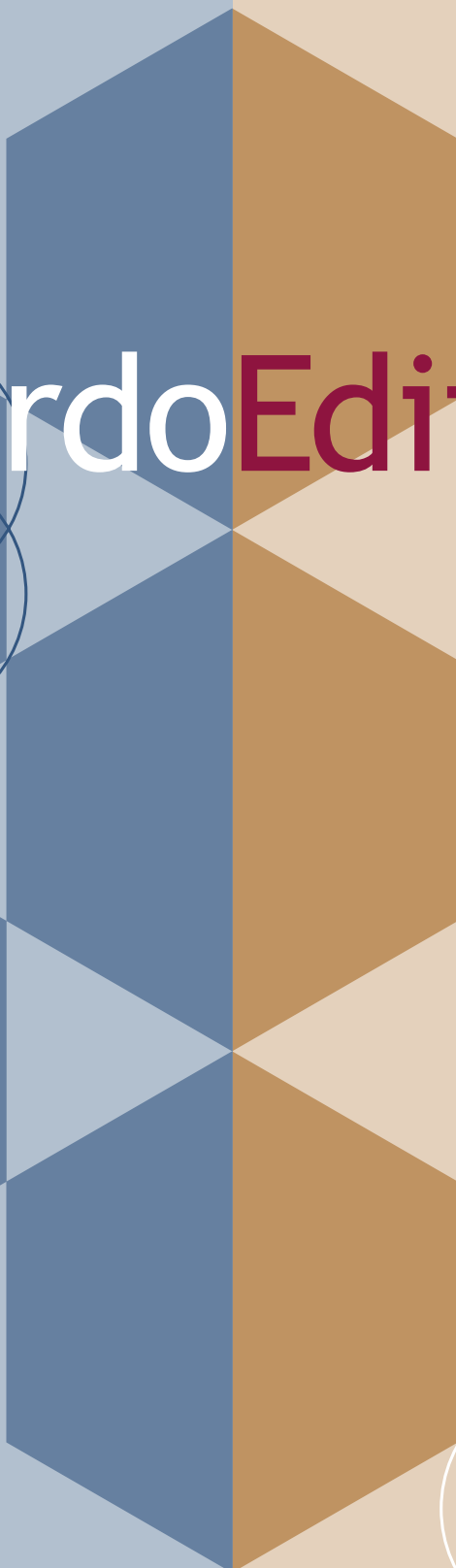
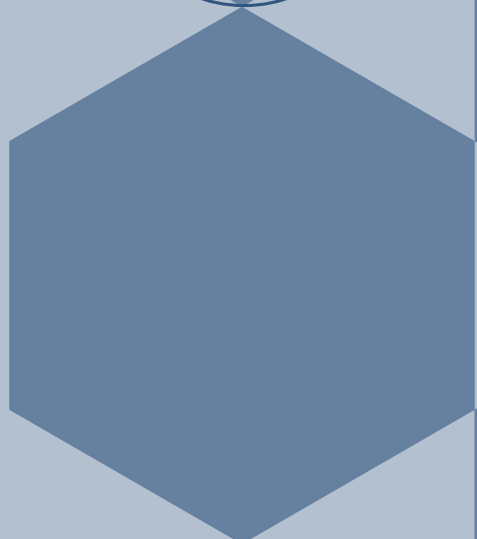


Leonardo Editor



Specified by ETSI.
Powered by Java.

Designed by
Da Vinci Communications.

<http://www.davinci-communications.com>

It's user friendly

Leonardo Editor is developed for test engineers by test engineers.

Our experience of the way test tools are used, and attention to detail, have helped us to make this the most efficient and easy to use TTCN editor on the market.

Leonardo Editor is a sophisticated tool to create and edit TTCN specifications. It combines a user friendly interface with powerful features and uniform handling across many different platforms.

The Leonardo Editor is platform independent because it uses the Java 2™ platform.

It supports all versions of the TTCN standard, ISO/9646-3; from the original 1992 edition to the latest 1998 version.

The Editor comes in two versions:

Leonardo Editor Base Version is an advanced TTCN Editor and is competitively priced.

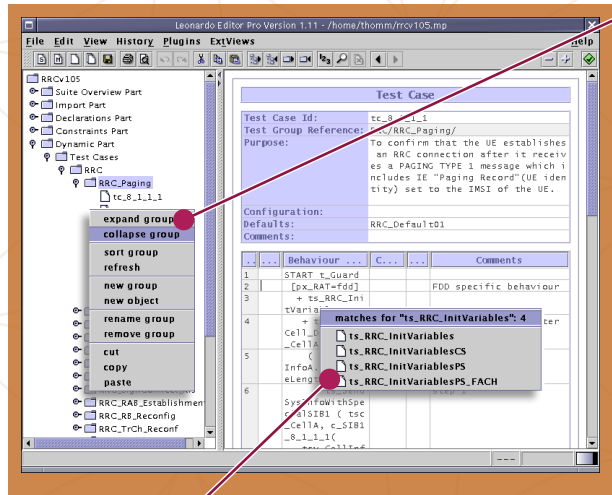
Leonardo Editor Pro Version provides you with the unique open plugin interface to easily adapt to existing test environments and integrate with third party tools for maximum power.

Context sensitive popup menus

Giving you access to editing functions where you need them. Many time saving features are presented via scrollable popup menus.

Click&Pick

This function lets you insert identifiers of TTCN objects by selecting them from a menu. Identifiers are grouped by type.

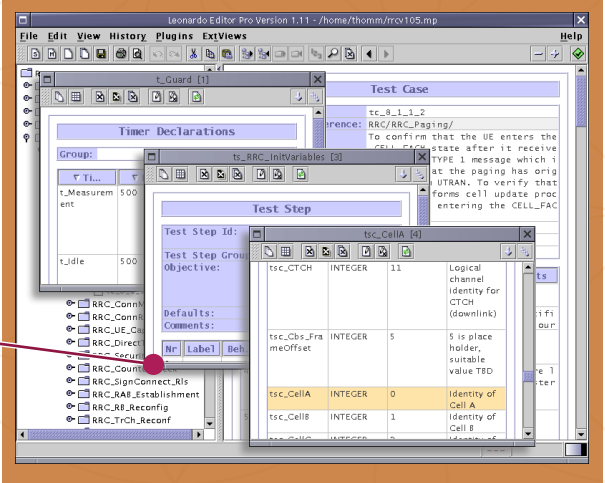


Hyper-Find

Activated by using CTRL+right-click on any word, anywhere. Leonardo Editor will search through all defined identifiers for occurrences of this word and present the matches in a scrollable popup menu, grouped by type. Selecting one of the entries will take you to its definition.

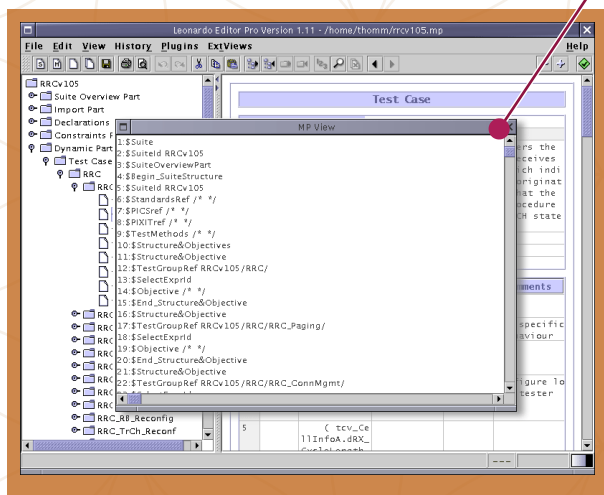
External Views

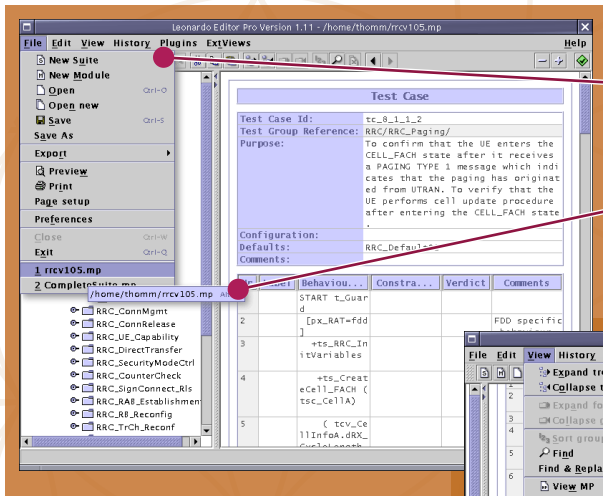
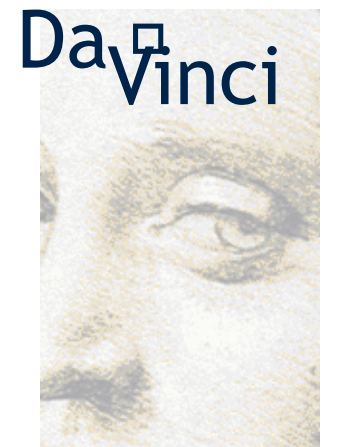
The definition can either be displayed in the main window or in an external view window. You can open as many external views as you need for browsing different proformas or copying information.



View the MP Source

It is possible to view the MP source at any time during the editing process. This can be useful for debugging purposes to find errors reported by line number. Every line in the source view is preceded by its line number to make this easy. The powerful Hyper-Find can also be used in the MP view.





File Menu

Leonardo Editor always keeps track of the files you visit and presents them in the file menu, so you don't waste time searching for them.

Context Help

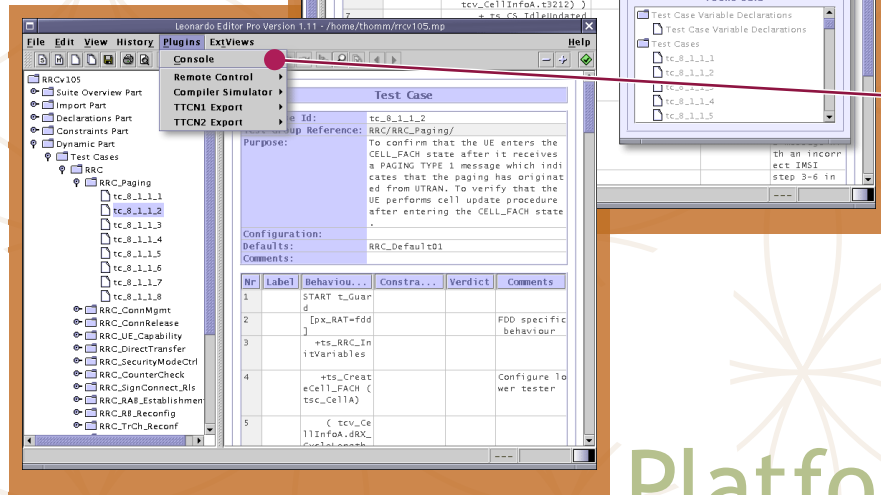
If you rest the mouse pointer over one of those entries, the full path is displayed as context help—one of the many details that make working with Leonardo much more enjoyable.

Find & Replace

The powerful Find & Replace function also employs Perl5 regular expressions, which enables you to search for complex patterns in your specifications.

True Flexibility

With plugins that can automate, integrate and simplify any of your tasks.



Powerful

- Leonardo Editor is fully compliant with all specifications; from TTCN1 through to TTCN2++.
- All features of the TTCN standard are completely supported; such as groups for all TTCN object types, collective comments and TTCN modules.
- A high performance parser can handle the larger test suites specified by ETSI.
- Advanced HTML, PDF & Postscript export can convert single TTCN objects or the whole test suite into the selected file format.
- Powerful Perl5 regular expressions let you search and replace by specifying descriptions of intricate patterns.

Why is it important to you?

- Complete TTCN support will keep you going as your other tools catch up to the TTCN standard.
- Support for all currently available TTCN versions lets you easily migrate your legacy TTCN test specifications.
- The Java 2™ platform gives you the freedom to choose your working environment.
- The unified graphical user interface will make your users more productive.
- Wide industry support for Java 2™ will guarantee quality and maturity for your deployment platform.

Platform independent

- Leonardo Editor is implemented as a pure Java application.
- Leonardo Editor has been extensively tested on operating systems such as MS Windows® 95/98/NT, Solaris® 7 & Linux.
- Leonardo Editor is independent of computing platform or operating system, as long as the Java 2™ platform is supported.
- Java Foundation Classes (JFC), also known as Swing™, provide a unified graphical user interface across all platforms.

PLEASE CHECK OUT THE FULLY FUNCTIONAL DEMO VERSION OF LEONARDO EDITOR PRO
<http://www.davinci-communications.com>

communications

Featuring:

- Hyper-Find; click on any word & jump to the matching data
- Full-Text Search
- Find & Replace
- Perl5 Regular Expressions
- Multiple Views
- Navigation History
- Undo/Redo
- Clipboard Functions
- Extensive Context Menus
- MP Source View
- Advanced Tree Navigation
- File History
- Open Plugin Interface (Pro only)
- Print Test Suites
- Support of compressed MP Files
- Customise Column Width
- Persistent Column Width
- Constraint Templates
- Comprehensive Online Help
- Persistent Window Position & Size
- Group and Table Sorting
- Click&Pick Identifier Lists
- Automatic Overview Derivation
- Automatic Group References
- Built-in HTML, PDF & Postscript Export
- Display line numbering or indentation level in behaviour descriptions

It's flexible

Leonardo Editor Pro provides a plugin interface which can be used to extend its functionality. The main function of this plugin interface will be to facilitate the interaction of the editor with third party TTCN tools like compilers, syntax checkers, etc. It can also be used to manipulate the TTCN data in the editor. Another example for its use is the development of export filters to create different output formats, e.g. older TTCN standard compliant MP code or XML code.

Plugins communicate with the editor via a **PluginAdaptor**, which provides methods to access editor functions and gain access to the internal TTCN data.

The **PluginHandler** is the part of the editor that is responsible for the administration of the plugins. It loads, instantiates & integrates the plugins into the editor.

The **TTCN data** structures can be directly accessed and manipulated by a plugin.

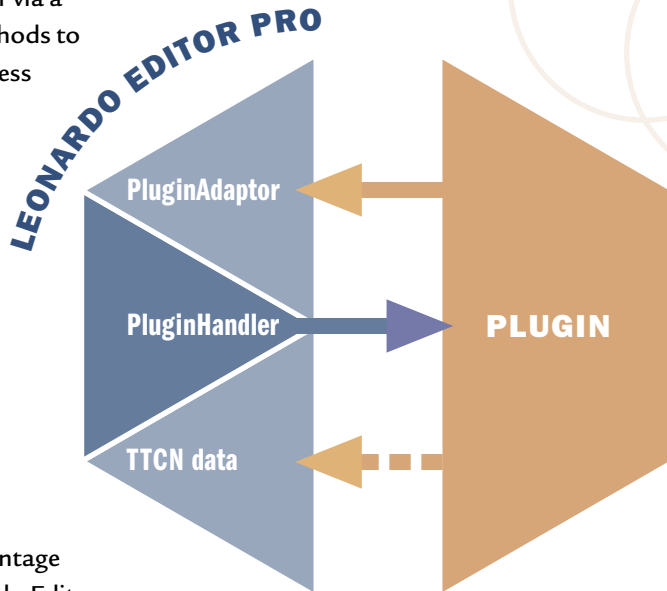
To encourage our users to take advantage of the added flexibility of the Leonardo Editor Pro, we provide full documentation of all plugin APIs and four example plugins as source code to illustrate the concept:

CompilerSimulator—demonstrates the cooperation with external TTCN compilers.

RemoteControl—controls the editor display remotely, e.g. tracers, etc.

TTCN1—export TTCN1 compliant MP code.

TTCN2—the editors internal export functionality as a plugin.



Why is it important to you?

■ *Plugins tie together applications from existing test environments or third party tools.*

■ *Plugins can provide graphical user interfaces (GUI) for the whole process cycle of editing, compilation, parameterisation, execution, tracking and debugging.*

■ *Plugins can control other tools such as syntax checker or compiler etc.*

■ *Plugins can export the TTCN data to other formats.*

**RESPONSIVE TO YOUR NEEDS,
WE OFFER A SERVICE FOR
THIS PARTICULAR CONCEPT.**

Our expert team can develop the plugins for your requirements. To discuss your ideas, please contact us at plugins@davinci-communications.com

Da Vinci Communications Ltd.

PO Box 38 078
Christchurch
New Zealand

Tel: +64 3 383 8311 □ **www:** <http://www.davinci-communications.com>

Fax: +64 3 383 8310 □ **email:** info@davinci-communications.com

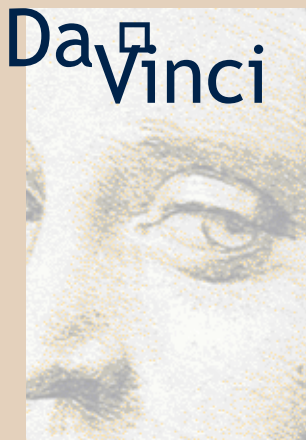
Newly emerging technologies like 3G, Bluetooth, GPRS, TETRA and many more are recognising the need for uncompromised quality; and the role testing plays to achieve this goal.

TTCN (Tree & Tabular Combined Notation) is the standard chosen by those who care about excellence.

Using Leonardo Editor Pro means having a competitive advantage through intelligent adaptation into test systems.

Minimum System Requirements:

Pentium class CPU 300 MHz,
64 MB RAM, mouse,
colour display.



communications